

# IMDS Newsletter 44

12<sup>th</sup> November 2016 Issue 3 / 2016 (c) IMDS Steering Committee



INTERNATIONAL  
MATERIAL DATA  
SYSTEM

## UPDATE

In this IMDS Newsletter issue you can read about the following:

- |  |        |
|--|--------|
| 1. IMDS Release 11.0 - New Module "IMDS Chemistry Manager" | page 1 |
| 2. Upcoming IMDS Release 11.0 - Further Changes            | page 2 |
| 3. Next steps after IMDS Release 11.0                      | page 3 |
| 4. Users' Echo - emails sent to IMDS                       | page 3 |

### 1. IMDS Release 11.0 - New Module "IMDS Chemistry Manager"

**Please note: The IMDS Chemistry Manager module was not rolled out in this Release. The date for activating this module will be communicated in advance.**

Chemical regulations are becoming a lot more complex. It is no longer sufficient to only know the presence of a substance in a material in order to comply with requirements, but a lot more information needs to be provided to understand if the material can continue to be used. For the Biocidal Product Regulations (BPR) you need to understand why you added a substance – is the substance intended to perform a biocidal function in this material, if so – is it approved for this product type?

With the REACH Authorization, we need to understand whether we can continue to use materials with substances that have been listed in Annex XIV, e.g. will this substance be authorized for this material, is this material produced outside of European Economic Area, or will we need to substitute the use of this substance in the material?

Up to now, the answers to these questions cannot be provided with the normal functionality of IMDS.

These challenges are addressed with the new module **IMDS Chemistry Manager**. This module will enable the information to be provided directly from the material producers and the first users of the material (i.e. the 1st component manufacturer in the supply chain) and can be shared in an efficient manner with everyone using this material.

Great care has been taken to maintain the confidentiality within the supply chain whilst providing the users with the necessary information to address their required legal challenges.

The information that is requested with the IMDS Chemistry Manager module is not expected to be used by the general IMDS users, so a separate IMDS Chemistry Manager role has been created. It is expected that this role would be used by Product Stewardship managers or people with the necessary information to answer the BPR and REACH questions.

A more detailed description of this new module can be found in the [Detailed IMDS Release 11.0 information document](#).

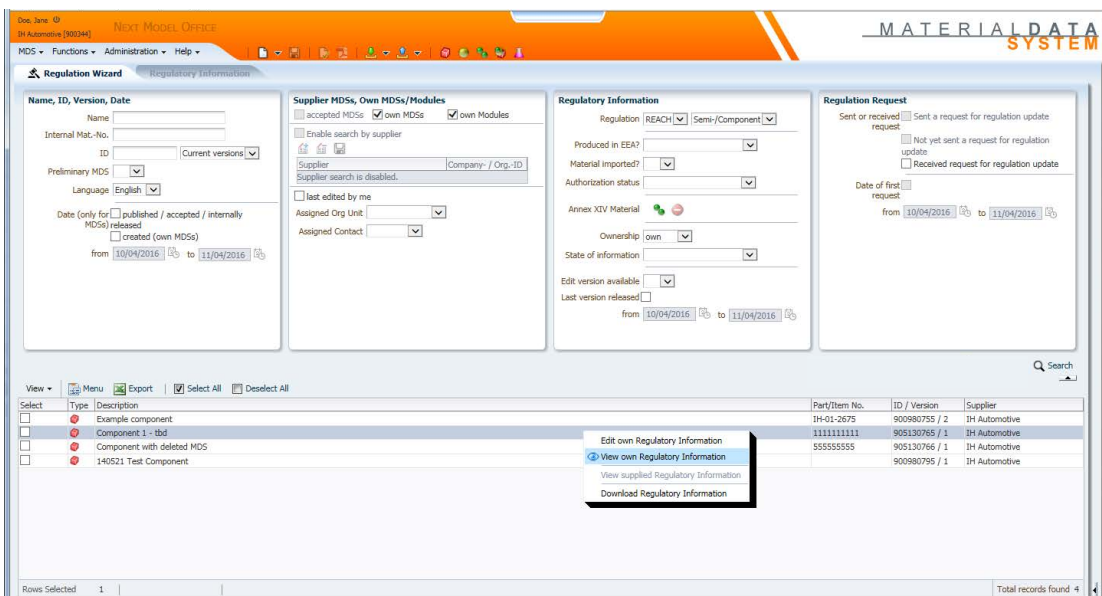
## 2. Upcoming IMDS Release 11.0 - Further Changes

IMDS Release 11.0 production rollout was completed on 12th / 13th November 2016 (during a weekend). For this release, the rollout process, including a longer testing period was applied prior to production of IMDS Release 11.0 since it is impacting IMDS Advanced interface (IMDS-AI). The following changes are included:

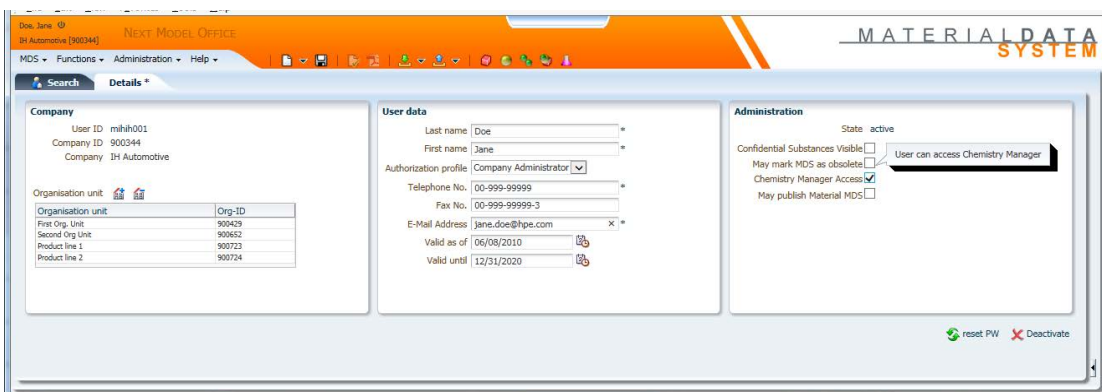
- Mark own MDSs as 'obsolete'
- Allow Forwarding for Material MDSs
- Final version MDSs must not contain references to preliminary MDSs
- The checkbox titled 'I have declared all GADSL substances' and related check for Material MDSs will be removed

The IMDS Chemistry Manager module had to be deactivated for this rollout so that this functionality is not available yet within IMDS Release 11.0. We were forced to take this step during the rollout as precaution measure in order to ensure IMDS Release 11.0 will be available on time as announced and regular IMDS operations will not be further impacted. We are working to resolve the occurred issues so that we can activate the IMDS Chemistry Manager as soon as possible. We will keep you informed.

A detailed description of the changes can be found in the [IMDS Release 11.0 information](#) and in the [Detailed IMDS Release 11.0 information document](#) on the Chemistry Manager enhancement.



Screenshot from the IMDS Chemistry Manager module - "Regulation Wizard"



Adding IMDS Chemistry Manager access to a User profile

### 3. Next steps after IMDS Release 11.0

IMDS Chemistry Manager is a new module introducing new environmental regulatory information combined with new processes and related functionality in IMDS. For example, regulatory information is provided across all versions of a single MDS, which can be requested across the supply chain without disclosure of the supplier company information.

We are aware that there will still be room for lessons learned and improvements once the IMDS Chemistry Manager is productive and in use by the automotive supply chain. But, because the IMDS Chemistry Manager has been jointly designed by representatives of the supplier associations and the car manufacturers, we are excited about the immediate benefits that the IMDS community will see with this new functionality.

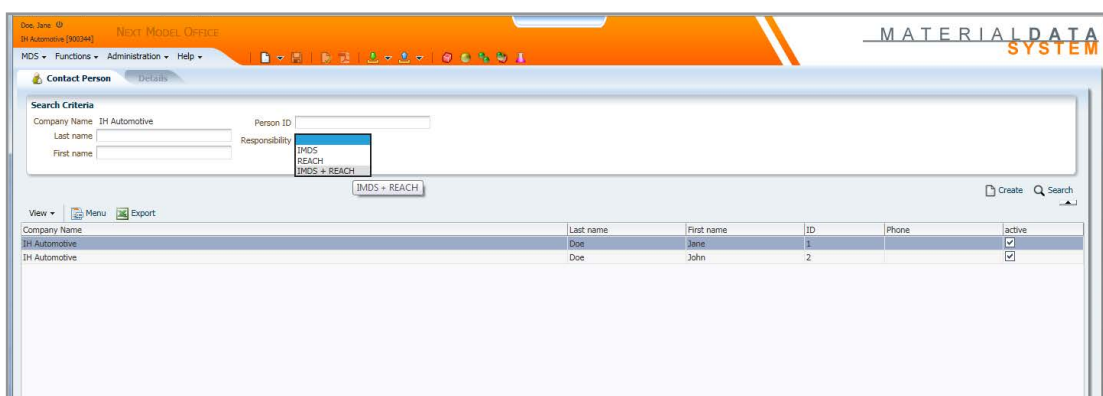
At this time we would like to thank all stakeholders, especially the representatives of AIAG, CLEPA and JAPIA, who were involved in the testing of the new IMDS Release 11.0 functions, particularly the IMDS Chemistry Manager. Their testing activities and valuable feedback has contributed to the improvement of IMDS Release 11.0. Additionally, their feedback will be used for creating the new IMDS Chemistry Manager FAQ, which will be available for all users once the IMDS Release 11.0 is rolled out.

### 4. Users' Echo - e-mails sent to IMDS

**Recently I had the problem, that I got MDSs with an invalid e-mail address at the Supplier Data. When there are discussion necessary, it is very hard to find the correct Contact Person. Maybe you can put this topic on your next Newsletter: In the IMDS Online application, there must be a valid e-mail address for the Contact Person.**



In your own company, the Company Administrator can search through the Administration > Contact Person or Administration > REACH Contacts options to find the IMDS, REACH or IMDS+REACH contact persons.



As a Company Administrator for your company, please regularly check if the data for the Contact Persons are still valid. If not, then please update them because this data is necessary for other companies to be able to get in contact with you.

## Your participation

Please help us with your feedback. If you would like to contribute to this Newsletter with articles and comments concerning the IMDS and environmental issues in your company, please contact us by email. For suggestions, further information and questions, please contact [imds-newsletter@hpe.com](mailto:imds-newsletter@hpe.com)

### 6. Who to contact at the automobile manufacturers?

Anadolu ISUZU		Mitsubishi	Mitsubishi IMDS
Otomotiv	E. Sener		Coordinator
Aston Martin Lagonda	D. Pearson	NEVS	M. Axsater
BMW	Dr. K. Oldenburg-Nazaruk	Nissan	N. Hattori
		Porsche	M. Weck
DAF Trucks	DAF IMDS	Renault	Renault IMDS
	Coordinator		Coordinator
Daihatsu	Daihatsu IMDS	Renault Samsung	Renault Samsung
	Coordinator		IMDS Coordinator
Daimler	V. Ackermann	SAIC	Yusong He
FAW-VW	Xin Bao	SAIC GM	Helian Qingjun
FCA US LLC	Chris Sidney	SAIC Volkswagen	Shen Jian
Fiat	K. Zardo	Scania	Frank Schlüter
Ford	S. Riewer	Ssangyong	Chae-Eun Lee
Fuji Heavy Industries	SUBARU IMDS	Motor Company	
	Coordinator	StreetScooter	Philipp Franz
General Motors	Anne Grütznier	Suzuki	Suzuki IMDS
GM India	Kirankumar Jagatap		Coordinator
GM Korea	Hyunkyung Kim	Tata Motors	M. Hatwalne
Hino	HN-Gikan Peis	Tesla Motors	S. Nagaraj
Honda	Honda IMDS	Toyota	E. Hoffmann
	Coordinator	UD Trucks	K. Kuwahara
Honda-Sundiro	Akira Iwatake	Volkswagen	VW IMDS
Hyundai	T. Unger		Coordinator
Isuzu	Y. Hara	Volvo Car	
Jaguar Land Rover	M. Griffin	Corporation	I. Rade
JSV AVTOVAZ	O. Demicheva	Volvo Group	Volvo Group IMDS
Karma	G. Lewis		Coordinator
Kubota	Kubota Corp. Quality	Wuyang-	Wuyang-Honda
	Ass. Promotion Dpt.	Honda Motors	IMDS Coordinator
Mazda	T. Tomita		

## Editorial

The collection of the contents of this IMDS Newsletter is carried out on behalf of the IMDS Steering Committee by Dr. Ilona Herrmann, Hewlett-Packard GmbH

### IMDS Service Center support

**Chinese Service Center** – [imds-eds-helpdesk-china@hpe.com](mailto:imds-eds-helpdesk-china@hpe.com)

Monday through Friday, 9:30 a.m. to 12:30 a.m. and 1:30 p.m. to 5 p.m. BST (GMT+8) at +86 27 87431668

**English-speaking European Service Center** – [imds-helpdesk-english@hpe.com](mailto:imds-helpdesk-english@hpe.com)

Monday through Friday, 8 a.m. to 4.30 p.m. (GMT+1) at +36 1 778 9821

**French- and German-speaking European Service Center** – [imds-helpdesk-emea@hpe.com](mailto:imds-helpdesk-emea@hpe.com)

Monday through Friday, 8 a.m. to 4.30 p.m. (GMT+1) at +33 1 57 32 4856

**Japanese Service Center** – [jpimds-helpdesk@hpe.com](mailto:jpimds-helpdesk@hpe.com)

Monday through Friday, 9 a.m. to 5.00 p.m. JST (GMT+9) at +81 3 4530 9270

**Korean Service Center** – [imds-helpdesk@hpe.com](mailto:imds-helpdesk@hpe.com)

Monday through Friday, 9 a.m. to 5.00 p.m. Seoul (GMT+9) at +82 2 2199 0203 ~4

**North American Service Center** – [imds-helpdesk-english@hpe.com](mailto:imds-helpdesk-english@hpe.com)

Monday through Friday, 8 a.m. to 6 p.m. (EST) at +1 844 650 4217