

IMDS Newsletter XXXV

15th November 2013, Issue 7 / 2013 (c) IMDS Steering Committee



INTERNATIONAL
MATERIAL DATA
SYSTEM

In this special issue for IMDS 2020 enhancements (referred to as IMDS Release 9.0) you can read about the following:

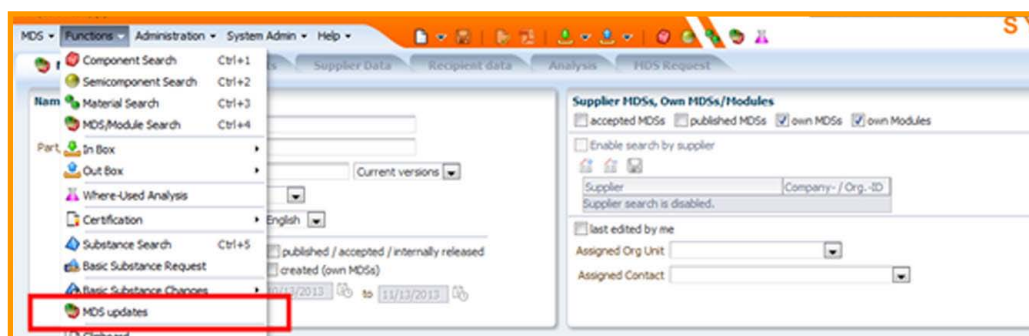
- | | |
|---|--------|
| 1. General Information about IMDS Release 9.0 | page 1 |
| 2. Allow faster MDS Updates | page 1 |
| 3. Restriction of Material MDSs containing confidential substances which are added to the GADSL or REACH-SVHC lists | page 2 |
| 4. Additional MDS update options when an OEM company is the recipient | page 2 |
| 5. New or Updated IMDS Checks | page 2 |
| 6. New version rule for identical part numbers | page 2 |
| 7. Restrict MDS copies | page 3 |
| 8. Visibility of Own Confidential Substances | page 3 |
| 9. Users' Echo – emails sent to IMDS | page 3 |

1. General Information about IMDS Release 9.0

The current intent is for IMDS Release 9.0 Model Office Next test to begin early January 2014 for OEMs, IMDS Advanced Interface (IMDS-AI) licensees and a limited number of test users from the CLEPA, AIAG and JAPIA associations. We anticipate the Production IMDS Release 9.0 the end of March 2014. Exact release dates will be announced when defined and confirmed in accordance with the IMDS stakeholders.

IMDS Advanced Interface (IMDS-AI) licensees were provided with preliminary release and interface change notifications on October 31, and will have the 3 month testing period starting in January to adapt their in-house systems to the Release. As with all IMDS releases, IMDS-a2 is automatically updated to reflect the IMDS Release 9.0 enhancements, no IMDS-a2 user interaction is required. This Newsletter summarizes the planned enhancements; more details are available in the [IMDS Release 9.0 information](#).

2. Allow faster MDS Updates



This IMDS Release 9.0 enhancement provides quicker capability for IMDS users to identify supplier MDS updates when the supplier MDS is used within the user company's MDSs.

This feature lists supplier updated MDSs and names the specific owned or published MDSs which reference an older version of the supplier updated MDS. The update process is done in two steps. In the first step the update itself is done by replacing the old references with the new ones and executing a check afterwards. If the check result does not contain error messages, the MDS can then be released. Otherwise, the MDS can be processed manually to correct the errors. For convenience, multiple MDSs can be updated and released at once.

3. Restriction of Material MDSs containing confidential substances which are added to the GADSL or REACH-SVHC lists

When creating a Material MDS (MMDS) a substance can be added and flagged as confidential so long as it is not a GADSL or REACH-SVHC (substances of concern). However, if a substance marked as confidential in a MMDS is added to one of these lists later, the MMDSs can no longer be sent or referenced because substances of concern must be disclosed.

For owned MMDSs, the current IMDS check procedure prevents using such an MDS. This will be enhanced to return an error for all MDSs containing confidential substances of concern. Currently, Users with their User Settings marked to receive email notifications receive an email if their company has an MDS containing basic substances flagged as confidential and a used substance is added to the GADSL. This email mechanism will now be extended to also provide email notification when an MDS containing basic substances flagged as confidential and a used substance is added to the REACH-SVHC.

4. Additional MDS update options when an OEM company is the recipient

This IMDS 9.0 enhancement will accelerate the change process for an MDS through the supply chain. The communication between Tier 1 supplier and OEM is accelerated by optionally modifying the following attributes as recipient-specific data:

- Norms
- Recyclate Information
- Parts Marking
- Applications

5. New or Updated IMDS Checks

The following checks will be introduced in order to improve data quality in IMDS:

- Deactivated MDSs and MDSs containing deactivated substances will generate a check error
- Materials with an incorrect classification (using SC90 checks) will propose the correct classification
- A substance marked as confidential MUST have a valid CAS or EINECS #
- Explicit confirmation Jokers/Wildcards in MMDSs do not contain GADSL substances in the Joker
- 10%-rule applied on top-material for all 5.x material classifications

6. New version rule for identical part numbers

When a company sends a Component MDS (CMDS) to a recipient company, IMDS will check whether the sending company has previously provided any CMD with the same recipient part number to the receiving company. If the sending company has previously done so, new CMDSs for the same recipient part number must have the same CMDS ID (possibly with a different version number) as the previous submission for that recipient part number.

7. Restrict MDS copies

MDS copies make it harder to maintain and provide updates for the original data. Material MDSs should not be copied, but created and updated only by the material manufacturers. This is especially true of materials, yet semi-components and components must also be considered.

IMDS Release 9.0 implements the following changes in copy capabilities:

- Material copies are only allowed for the owner/creator of a material
- Accepted or published materials cannot be copied
- Accepted or published components and semi-components may be copied
- Accepted materials cannot be forwarded
- In a copy of an accepted or published (semi-)component all references are maintained
- For components and semi-components, users may copy a foreign (not accessible) reference in the ingredients tree to permit changes.

8. Visibility of Own Confidential Substances

Access to confidential substances needs to be restricted within the creating company, because some companies creating material data sheets of type material (MMDSs) do not want all of their employees accessing confidential substance information. So the visibility of own confidential substances in own MMDSs can be controlled in the Administration > User section by the Company Administrators. Visibility granted by another company to a user without access to own confidential substances is not affected.

9. Users' Echo - e-mails sent to IMDS

We are just getting used to the changes in IMDS design from IMDS Release 8.0. Now, we have learned there will be new functions with Release 9.0. What changes will be incorporated? Thanks.



Dear IMDS using company,

New IMDS 2020 enhancements will be implemented in IMDS Release 9.0, targeted to go into Production at the end of the first quarter 2014. The IMDS 2020 enhancements were defined by the OEMs and experts from the supplier organizations CLEPA, AIAG and JAPIA; representing the main geographical regions of IMDS (Europe, Americas and Asia). IMDS Release 9.0 is probably the most significant enhancement to IMDS since inception. This release focusses on speed, data quality improvements and reducing the reporting burdens of suppliers. Highlights include:

- A new capability which makes it easier for IMDS users to identify supplier MDS updates when the supplier MDS is used within the user company's MDSs.
- New checks (rule 3.2.2) to flag MDS issues during creation and help prevent customer rejections.
- New fields for Tier 1 suppliers which permit them to supplement or add missing Norm, Recyclate or Application relevant information on the Recipient page, alleviating delays to the PPAP process.
- The removal of the capability to copy another company's material MDS - if you are not the creator of a material MDS, how do you know if it has been affected by changes in GADSL?
- More standard OEM checks with more emphasis on error prevention during MDS creation.

We are extremely excited about the changes coming to IMDS in Release 9.0.

Best regards,

IMDS Newsletter Team

Your participation

Please help us with your feedback. If you would like to contribute to this Newsletter with articles and comments concerning the IMDS and environmental issues in your company, please contact us by email. For suggestions, further information and questions, please contact imds-newsletter@hp.com

10. Who to contact at the automobile manufacturers?

Anadolu ISUZU		Renault	Renault IMDS
Otomotiv	E. Sener		Coordinator
Aston Martin Lagonda	D. Pearson	Renault Samsung	Renault Samsung
BMW	Dr. K. Oldenburg-Nazaruk		IMDS Coordinator
Chrysler LLC	Chris Sidney	SAIC	Yusong He
Daimler	V. Ackermann	Scania	Frank Schlüter
FAW-VW	Xin Bao	Shanghai GM	Shanshan Feng
Fiat	K. Zardo	Shanghai	Shen Jian
Ford	S. Riewer	Volkswagen	
Fuji Heavy Industries	SUBARU IMDS	Ssangyong	Kyoung Soo Kim
	Coordinator	Motor Company	
General Motors	Klaus Lang	Suzuki	Suzuki IMDS
GM India	Kirankumar Jagatap		Coordinator
GM Korea	Raeshil Gang	Tata Motors	M. Hatwalne
Honda	Honda IMDS	Tesla Motors	E. Shen
	Coordinator	Toyota	E. Hoffmann
Honda-Sundiro	Akira Iwatake	UD Trucks	K. Kuwahara
Hyundai	T. Unger	Volkswagen	VW IMDS
Isuzu	T. Koreeda		Coordinator
Jaguar Land Rover	M. Griffin	Volvo Car	
Mazda	T. Tomita	Corporation	I. Rade
Mitsubishi	T. Isogai	Volvo Group	Volvo Group IMDS
Nissan	H. Okuyama		Coordinator
Porsche	H. Ampferer	Wuyang-Honda Motors	Wuyang-Honda IMDS Coordinator

Editorial

The collection of the contents of this IMDS Newsletter is carried out on behalf of the IMDS Steering Committee by Dr. Ilona Herrmann, Hewlett-Packard GmbH



IMDS Service Center support

Chinese Service Center – imds-eds-helpdesk-china@hp.com

Monday through Friday, 9:30 a.m. to 12:30 a.m. and 1:30 p.m. to 5 p.m. BST (GMT+8) at +86 27 87431668

European Service Center – imds-helpdesk-emea@hp.com

Monday through Friday, 8 a.m. to 4.30 p.m. (GMT+1) at +36 1 778 9821

French-speaking Service Center – imds-helpdesk-emea@hp.com

Monday through Friday, 8 a.m. to 4.30 p.m. (GMT+1) at +33 1 57 32 4856

Japanese Service Center – jpimds-helpdesk@hp.com

Monday through Friday, 9 a.m. to 5.00 p.m. JST (GMT+9) at +81 3 4530 9270

Korean Service Center – imds-helpdesk@hp.com

Monday through Friday, 9 a.m. to 5.00 p.m. Seoul (GMT+9) at +82 2 2199 0203 ~4

North American Service Center – imds-helpdesk-america@hp.com

Monday through Friday, 8 a.m. to 6 p.m. (EST) at +1 972-403-3607