

# IMDS Newsletter XXXIV

2<sup>nd</sup> September 2013, Issue 6 / 2013 (c) IMDS Steering Committee



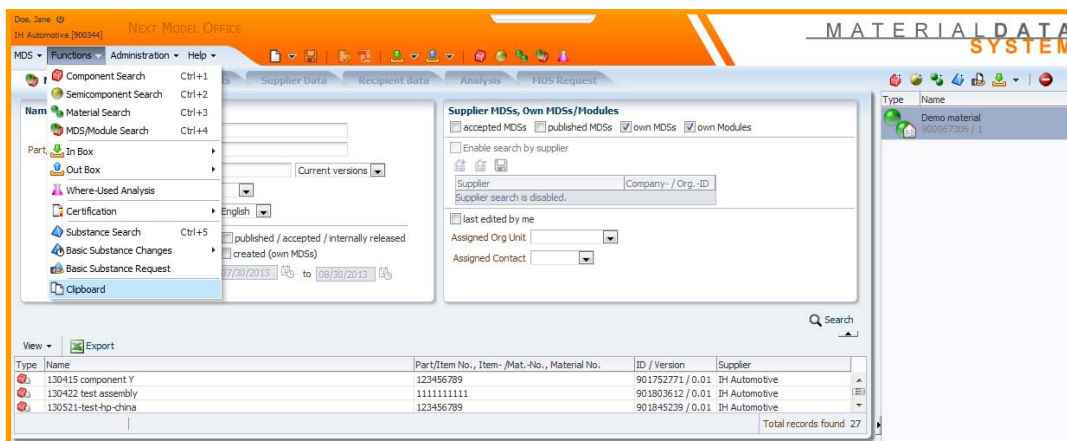
INTERNATIONAL  
MATERIAL DATA  
SYSTEM

In this special issue for IMDS NT (referred to as IMDS Release 8.0) you can read about the following:


- |   |        |
|---|--------|
| 1. IMDS Release 8.0 Clipboard function          | page 1 |
| 2. New IMDS Information pages                   | page 2 |
| 3. IMDS-a2 and IMDS-AI migration to Release 8.0 | page 2 |
| 4. IMDS 2020 enhancements                       | page 2 |
| 5. Toyota IMDS changes                          | page 2 |
| 6. Documents available for IMDS Release 8.0     | page 3 |
| 7. Users' Echo – emails sent to IMDS            | page 3 |

## 1. IMDS Release 8.0 Clipboard function

The Clipboard function can be used to hold material datasheets, basic substances and requests for easy access. For example, an often used material can be moved into the Clipboard for reuse in different material datasheets. If you login to IMDS, you can open the Clipboard using the menu **Functions > Clipboard**. It will be shown at the right hand side of your window:

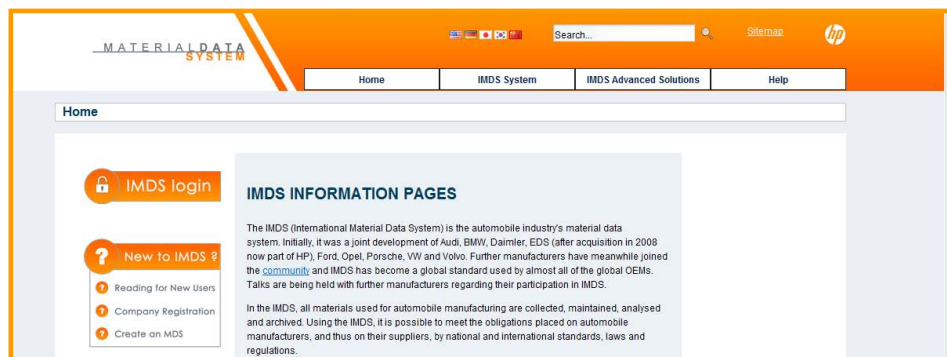


Next time you login, the Clipboard will be still visible with all the information retained from your last session. You can reuse your favorite data from the clipboard without searching again.

If you don't need the Clipboard visible for a portion of the time you are working in IMDS, you can use the small arrow at the bottom left-hand corner of the clipboard screen to collapse it. To remove an entry from the Clipboard, please use the context menu (right mouse click). To remove all entries, use the "Remove All" icon  at the top of the Clipboard.

## 2. New IMDS Information Pages

We plan to have new IMDS Information Pages (formerly IMDS Public Pages) available at the end of September/beginning of October 2013. The current IMDS Public Page content will be migrated to the new IMDS Information Pages, with the information reviewed and updated where necessary. The focus of the new Pages is improved functionality, better structure for easier navigation, and a modernized look and feel. Below is a preview of a new IMDS Information Page, from which you can navigate to any other IMDS-related information of interest to you.



## 3. IMDS-a2 and IMDS-AI migration to Release 8.0

For users of the IMDS-a2 and IMDS Advanced Interface (IMDS-AI) the migration to IMDS Release 8.0 is planned towards the end of the overall migration process. The exact date is still to be determined, but is targeted for September 2013. Although there is no preparatory work required, IMDS-a2 and IMDS-AI licensees will be notified in advance. AI users actively logging in to the IMDS web application will be redirected automatically to IMDS Release 8.0, in the same style as with other IMDS users being migrated.

## 4. IMDS 2020 enhancements

IMDS 2020 enhancements will be implemented in IMDS Release 9.0, which is planned to go into production at the end of the first quarter 2014. Changes to the IMDS Advanced Interface will be communicated beforehand according to the processes used for previous IMDS releases containing IMDS-AI changes. This also includes a three month testing period on IMDS Model Office Next for IMDS-AI licensees prior to production rollout.

The scope of the IMDS 2020 enhancements was defined by OEMs and experts from the supplier organisations CLEPA, AIAG and JAPIA, representing the main geographical regions of IMDS (Europe, North America and Asia). HP will realize this vision with IMDS Release 9.0 in 2014. IMDS Release 9.0 is probably the most significant enhancement to IMDS since it's inception. This release focusses on speed, data quality improvements and reducing the reporting burdens of suppliers. **Highlights include:**

- Allowing faster MDS updates by enabling you to identify, update and send MDS's that are affected by an update to an MDS sent by your supplier.
- Fixing new version errors (rule 3.2.2) before they are sent - preventing rejections from your customer.
- Allow the Tier 1 Supplier to correct or add missing Norm, Recyclate or Application relevant information in Chapter 4, alleviating delays to the PPAP process.
- Remove the ability to copy someone else's material MDS - if you are not the owner of the material MDS, how do you know if it has been affected by changes in GADSL?
- Commonising OEM checks by reducing the warning flags in IMDS and putting more emphasis at stopping errors at source.

We are extremely excited about the changes coming to IMDS in Release 9.0 and we hope that you will join us in testing them out when they hit the Model Office early in 2014.

## 5. Toyota IMDS changes

On 27th August 2013, Toyota changed its company-specific handling of Part/Item numbers and supplier codes when sending MDSs to Toyota. With these changes, the supplier code is

no longer checked separately before entering Toyota (recipient-) specific data for a material data sheet. However, the supplier code remains a mandatory entry field. The related search function for Part/Item numbers, which also shows the due date, has also been removed.

## 6. Documents available for IMDS Release 8.0

The following links provide access to several documents we have created to assist you in preparing for the transition to IMDS Release 8.0:

**1. Quick Reference documents**, providing a step-by-step overview on two basic functions:

[Download Create tips for components](#)

[Download Create tips for a material MDS](#)

**2. Video Tutorials**, describing how to work within IMDS Release 8.0:

[IMDS Release 8.0 Introduction - Homepage and Login \(9 MB\)](#)

[IMDS Release 8.0 Introduction - Landing page and Search Criteria \(12 MB\)](#)

[IMDS Release 8.0 Introduction - Search Results \(22 MB\)](#)

[IMDS Release 8.0 Introduction - Details \(12 MB\)](#)

[IMDS Release 8.0 Introduction - Accept and Reject \(9 MB\)](#)

**3. Presentation comparing functions IMDS Release 7.2 and IMDS Release 8.0**

[Download the presentation](#)

**4. [IMDS Release 8.0 IMDS User Manual](#)**

Please remember to check on the [IMDS NT Information webpage](#) regularly.

For users already working with IMDS Release 8.0 all this information is also accessible directly from within the application.

## 7. Users' Echo - e-mails sent to IMDS

**We just started to use IMDS Release 8.0. Now, we experience several difficulties when using the Back button in the browser - why is this such a problem? Thanks.**



Dear IMDS using company,

As the name suggests, Web Browsers were originally designed to browse the web. That is, to flip back and forth through static web pages like the pages in a magazine. The browser Back button is a holdover from those days, and does not work well in modern dynamic web applications such as in IMDS. The information necessary to dynamically create a page exists while the user views the page, and is lost when the user leaves the page. When you use the Back button, the previous page does not have the inputs needed to create it. Therefore, in IMDS and other dynamic web applications, the Browser Back button is not supported, and often produces an error.

Similarly, please avoid more than one mouse click upon IMDS menu items, icons, and other screen elements. This includes double-clicking. Clicking twice instructs IMDS to perform the selected action twice. If the operation is in process, attempting to re-execute while executing can produce an error.

The back button and mouse clicks are functions of your Web Browser, (e.g. Internet Explorer) and cannot be controlled by IMDS. Some browsers communicate these events to IMDS better than others, and are less likely to experience issues. The IMDS Team is working to reduce the issues described here, and other similar issues reported to the IMDS Service Desks for all Web Browsers.

Best regards,  
IMDS Newsletter Team

## Your participation

Please help us with your feedback. If you would like to contribute to this Newsletter with articles and comments concerning the IMDS and environmental issues in your company, please contact us by email. For suggestions, further information and questions, please contact [imds-newsletter@hp.com](mailto:imds-newsletter@hp.com)

## 8. Who to contact at the automobile manufacturers?

Anadolu ISUZU Otomotiv	E. Sener	Renault	Renault IMDS Coordinator
Aston Martin Lagonda	D. Pearson	Renault Samsung	Renault Samsung IMDS Coordinator
BMW	Dr. K. Oldenburg-Nazaruk		Yusong He
Chrysler LLC	Chris Sidney	SAIC	Frank Schlüter
Daimler	V. Ackermann	Scania	Shanshan Feng
FAW-VW	Xin Bao	Shanghai GM	Shen Jian
Fiat	K. Zardo	Shanghai	
Fisker Automotive	Dee D. Flint	Volkswagen	
Ford	S. Riewer	Ssangyong	Kyong Soo Kim
Fuji Heavy Industries	SUBARU IMDS Coordinator	Motor Company	
General Motors	Klaus Lang	Suzuki	Suzuki IMDS Coordinator
GM India	Kirankumar Jagatap	Tata Motors	M. Hatwalne
GM Korea	Raeshil Gang	Tesla Motors	E. Shen
Honda	Honda IMDS Coordinator	Toyota	E. Hoffmann
Honda-Sundiro	Akira Iwatake	UD Trucks	K. Kuwahara
Hyundai	T. Unger	Volkswagen	VW IMDS Coordinator
Isuzu	T. Koreeda	Volvo Car Corporation	I. Rade
Jaguar Land Rover	M. Griffin	Volvo Group	Volvo Group IMDS Coordinator
Mazda	T. Tomita		Wuyang-Honda IMDS Coordinator
Mitsubishi	T. Isogai		
Nissan	H. Okuyama	Wuyang-Honda	
Porsche	H. Ampferer	Honda Motors	

### Editorial

The collection of the contents of this IMDS Newsletter is carried out on behalf of the IMDS Steering Committee by Dr. Ilona Herrmann, Hewlett-Packard GmbH



## IMDS Service Center support

**Chinese Service Center** – [imds-eds-helpdesk-china@hp.com](mailto:imds-eds-helpdesk-china@hp.com)

Monday through Friday, 9:30 a.m. to 12:30 a.m. and 1:30 p.m. to 5 p.m. BST (GMT+8) at +86 27 87431668

**European Service Center** – [imds-helpdesk-emea@hp.com](mailto:imds-helpdesk-emea@hp.com)

Monday through Friday, 8 a.m. to 4.30 p.m. (GMT+1) at +36 1 778 9821

**French-speaking Service Center** – [imds-helpdesk-emea@hp.com](mailto:imds-helpdesk-emea@hp.com)

Monday through Friday, 8 a.m. to 4.30 p.m. (GMT+1) at +33 1 57 32 4856

**Japanese Service Center** – [jpimds-helpdesk@hp.com](mailto:jpimds-helpdesk@hp.com)

Monday through Friday, 9 a.m. to 5.00 p.m. JST (GMT+9) at +81 3 4530 9270

**Korean Service Center** – [imds-helpdesk@hp.com](mailto:imds-helpdesk@hp.com)

Monday through Friday, 9 a.m. to 5.00 p.m. Seoul (GMT+9) at +82 2 2199 0203 ~4

**North American Service Center** – [imds-helpdesk-america@hp.com](mailto:imds-helpdesk-america@hp.com)

Monday through Friday, 8 a.m. to 6 p.m. (EST) at +1 972-403-3607