

# IMDS Newsletter XXVI

15<sup>th</sup> November 2011, Issue 3 / 2011 (c) IMDS Steering Committee



INTERNATIONAL  
MATERIAL DATA  
SYSTEM

## In this issue you can read about the following:

<b>What has happened since the last IMDS Newsletter</b>	<b>page 1</b>
<b>1. Settings in IMDS - Part VI - General Responsibilities for all Users</b>	<b>page 1 / 2</b>
<b>2. GADSL Update in IMDS</b>	<b>page 3</b>
<b>3. Users' Echo – emails sent to IMDS</b>	<b>page 3</b>
<b>4. Automobile manufacturers' contacts and IMDS Service Center support</b>	<b>page 4</b>

## IMDS Facts & Figures

### 2<sup>nd</sup> Nov 2011

Update of the IMDS Recommendation 019

### Today

185,523 users registered from 88,325 companies

## What has happened since the last IMDS Newsletter

**02-Nov-2011** - Updated version of the Recommendation IMDS019 "Electric/Electronic (E/E) components and assemblies"

**27-Oct-2011** - Two changes in IMDS:  
1. For MDSs sent to Renault, the current tolerance check percentage (13%) is amended to 20% allowance.  
2. New substance group "Conflict Minerals" introduced in IMDS - [FAQ on Conflict Minerals](#).

**08-Sep-2011** - FAW-VW (company ID 115184) and Shanghai VW (company ID 94159) joined the IMDS. Please note that FAW-VW and Shanghai VW are not Org. Units of the Volkswagen Group, but completely separate companies.

**06-Sep-2011** - IMDS Recommendations deactivated: IMDS003 Rubber (Elastomer) Material Compositions, IMDS010 Plastic Material Compositions, IMDS013 Thermoplastic Elastomer (TPE) Material Compositions. The regulations for such MDSs are now included in Annex I to Recommendation IMDS001 available in the screen Recommendations within IMDS.

**26-Aug-2011** - Additional requirements apply to all MDSs sent to Hyundai and KIA. [FAQ](#)  
01-Aug-2011 - [Updated Suzuki IMDS manual](#).

**29-Jul-2011** - Substances added to the Candidate List of REACH on 20-Jun-2011 were flagged as SVHCs in IMDS.

**25-Jul-2011** - For BMW the following entry fields in IMDS will be checked:

Part/Item No.: 7-digit, numeric  
Drawing dated: 2-digit, numeric  
Drawing Change Level: 6-digit, alphanumeric  
Supplier Code: numeric, hyphen or slash allowed, preferred format 123456/10

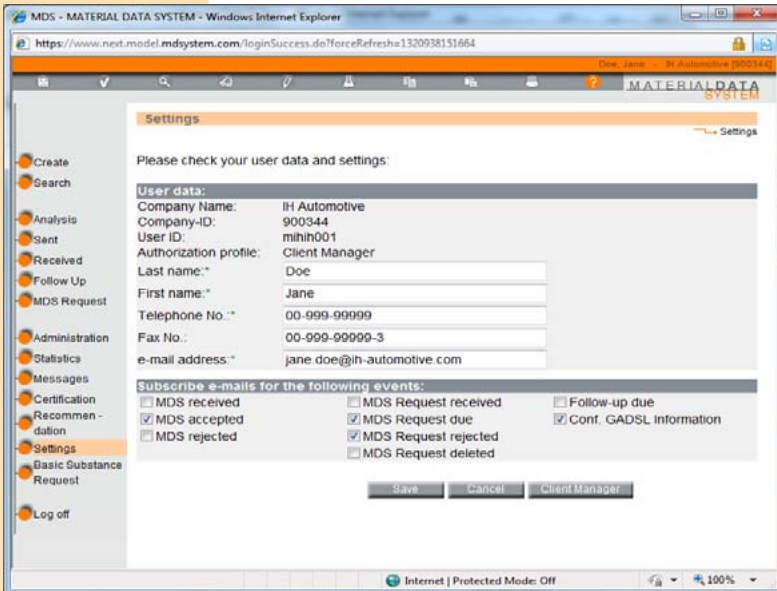
**22-Jul-2011** - All Renault B/G/O classification of substances from the basic substances list has been updated. Renault collected information to help their suppliers compare substances previous status, new status and GADSL status. [FAQ](#)

## 1. Settings in IMDS - Part VI - General Responsibilities for all Users

No matter what their profile, every user can update his/her settings like name, telephone number or email address. It is the responsibility of each user to maintain the data. It

is prohibited to take over another person's ID; therefore, IMDS requires you to sign the Terms of Use before using the system and these are only

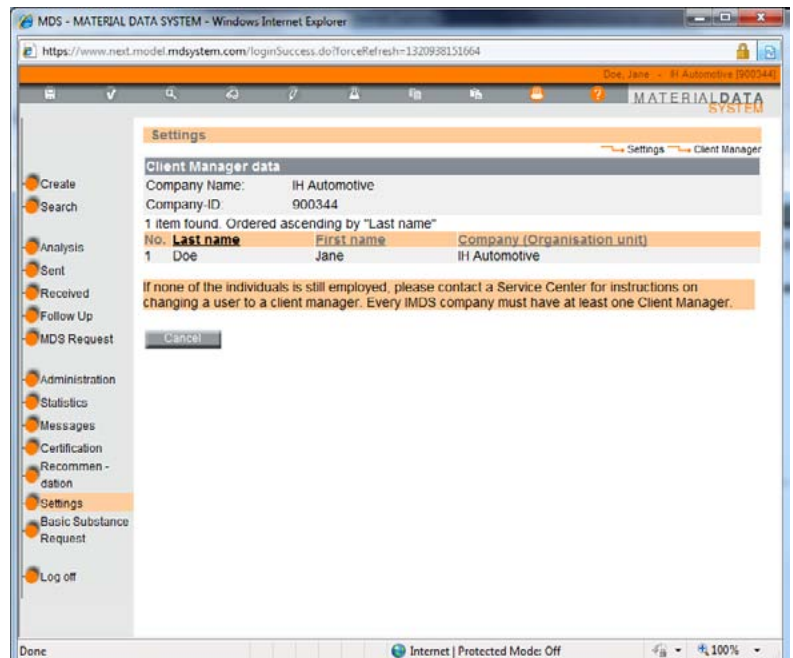
(continued on page 2)



*You can find former articles on using the IMDS administrative functions in previous issues of the IMDS Newsletter.*

(continued from page 1)  
displayed at first login on a new ID. For security reasons, new passwords are sent only to the email on the ID.

Since many users do not log into IMDS frequently, the capability was introduced of having the system send your user ID an email to notify you that you may need to take action. This is purely voluntary and you can unsubscribe at any time.



In the lower section of the screen it is possible to subscribe to email receiving in the different events. The benefits of implementing alternative emails:

- emails can be addressed to individuals
- emails can be watched and re-watched any time, independent from IMDS
- Users are informed in time without having to log-in to IMDS
- emails show date and time of triggering event

Companies/users can decide if they want to receive emails, who shall receive emails and in which events they want to receive emails.

All users can register to get informed about the GADSL update and possibly contained substances marked as confidential in own latest MDSs. With Release 7.0, Client Managers are automatically registered for this message and need to unsubscribe if they do not want to get this information.

At the bottom of the settings window, a separate Client Manager button is shown that, when activated, brings up another window that displays all Client Managers within the roof company along with any associated Org. Units. The Settings window also displays the IMDS company ID and the user's own profile category.

## 2. GADSL Update in IMDS

Every year, the GADSL List ([www.gadsl.org](http://www.gadsl.org)) is updated according to new legislative requirements. For example, a substance which is already declarable changes to the prohibited status. For November 2011, a GADSL Update is planned for IMDS – please get informed about the changes in the GADSL Update document. You are required to review your wildcards at each GADSL update and determine if the substances they represent are now declarable or prohibited. If so, you are required to resubmit and declare those substances. The IMDS will be running a program to determine if your substances that have been marked confidential need to have the confidential flag removed.

## 3. Users' Echo - e-mails sent to IMDS

**We are a supplier company in IMDS and have a question concerning the declaration of heat-treated components in IMDS - how is this to be reported?**



**Thanks.**

Dear IMDS user company,

In most heat treatments, you do not change the chemistry of the product. However, due to the necessity of having the information in the system, lack of change does not exempt the supplier that heat treats from entering data.

In an austempering process you don't change the chemical composition. It is an isothermal heating process so there is no change to the original MDS. The nitriding and case hardening processes are a thermal process where N (Nitrogen) and/or C (Carbon) is diffusing into the steel. The result is an inhomogeneous concentration of N and/or C in a thin surface layer (about 100 µm thickness in a nitriding and 1 mm in the case hardening process). Due to the inhomogeneous distribution, the concentration of N or C depends on the depth and cannot be described in IMDS. Since Nitrogen and Carbon are not elements which are declarable or prohibited or can be a source for danger in the handling or recycling process, the SC decided in this special case that Nitriding or Case Hardening need not be reported in IMDS.

In the above cases of austempering, nitriding and case hardening, there is no specific material that needs to be created.

How to handle in IMDS:

1. The company that does the treatment receives a component (or semi-component) in IMDS from the company that supplies the part in the physical supply chain with forwarding allowed.
2. The company that does the treatment creates a copy/forward of the received component (or semi-component) and adds the recipient information (being very careful with the part number and supplier code as you cannot make another copy/forward) and sends to the customer.

If the supplier of the part and the customer is the same, it is then up to the customer to determine whether the company that performs the treatment needs to report.

Best regards,  
IMDS Newsletter Team

### **Your participation**

Please help us with your feedback. If you would like to contribute to this Newsletter with articles and comments concerning the IMDS and environmental issues in your company, please contact us by email. For suggestions, further information and questions, please contact [imds-newsletter@hp.com](mailto:imds-newsletter@hp.com)

## 4. Who to contact at the automobile manufacturers?

Aston Martin Lagonda	D. Pearson
BMW	Dr. K. Oldenburg-Nazaruk
Chrysler LLC	Chris Sidney
Daimler	V. Ackermann
FAW-VW	Xin Bao
Fiat	K. Zardo
Fisker Automotive	Dee D. Flint
Ford	M. Sauerbier
Fuji Heavy Industries	SUBARU IMDS Coordinator
General Motors	Klaus Lang
GM India	Kirankumar Jagatap
GM Korea	Raeshil Gang
Honda	Honda IMDS Coordinator
Hyundai	T. Unger
Isuzu	Y. Tomita
Jaguar Land Rover	M. Griffin
Mazda	T. Tomita
Mitsubishi	T. Isogai
Nissan	H. Okuyama
Porsche	H. Ampferer
Renault	Renault IMDS Coordinator
Renault Samsung	Renault Samsung IMDS Coordinator
Saab	Maria Axsäter
SAIC	Yusong He
Scania	Frank Schlüter
Shanghai GM	Shanshan Feng
Shanghai Volkswagen	Shen Jian
Ssangyong Motor Company	Kyoung Soo Kim
Suzuki	Suzuki IMDS Coordinator
Toyota	E. Hoffmann
UD Trucks	K. Kuwahara
Volkswagen	B. Plaga
Volvo Car Corporation	J. Lundström
Volvo Group	Volvo Group IMDS Coordinator
Wuyang-Honda Motors	Wuyang-Honda IMDS Coordinator

### Editorial

The collection of the contents of this IMDS Newsletter is carried out on behalf of the IMDS Steering Committee by Dr. Ilona Herrmann, Hewlett-Packard GmbH



### IMDS Service Center support

#### **Chinese Service Center** – [imds-eds-helpdesk-china@hp.com](mailto:imds-eds-helpdesk-china@hp.com)

Monday through Friday, 9:30 a.m. to 12:30 a.m. and 1:30 p.m. to 5 p.m. BST (GMT+8) at +86 27 87431668

#### **European Service Center** – [imds-helpdesk-emea@hp.com](mailto:imds-helpdesk-emea@hp.com)

Monday through Friday, 8 a.m. to 4.30 p.m. (GMT+1) at +36 1 298 1536

#### **French-speaking Service Center** – [imds-helpdesk-emea@hp.com](mailto:imds-helpdesk-emea@hp.com)

Monday through Friday, 8 a.m. to 4.30 p.m. (GMT+1) at +33 1 55 69 7860

#### **Japanese Service Center** – [jpimds-helpdesk@hp.com](mailto:jpimds-helpdesk@hp.com)

Monday through Friday, 9 a.m. to 5.00 p.m. JST (GMT+9) at +81 3 4530 9270

#### **Korean Service Center** – [imds-helpdesk@hp.com](mailto:imds-helpdesk@hp.com)

Monday through Friday, 9 a.m. to 5.00 p.m. Seoul (GMT+9) at +82 2 2199 0203 ~4

#### **North American Service Center** – [imds-helpdesk-americas@hp.com](mailto:imds-helpdesk-americas@hp.com)

Monday through Friday, 8 a.m. to 6 p.m. (EST) at +1 972-403-3607