

# **IMDS Rec019 Application Codes for electronic modules**

simplified picture of decision matrix published in

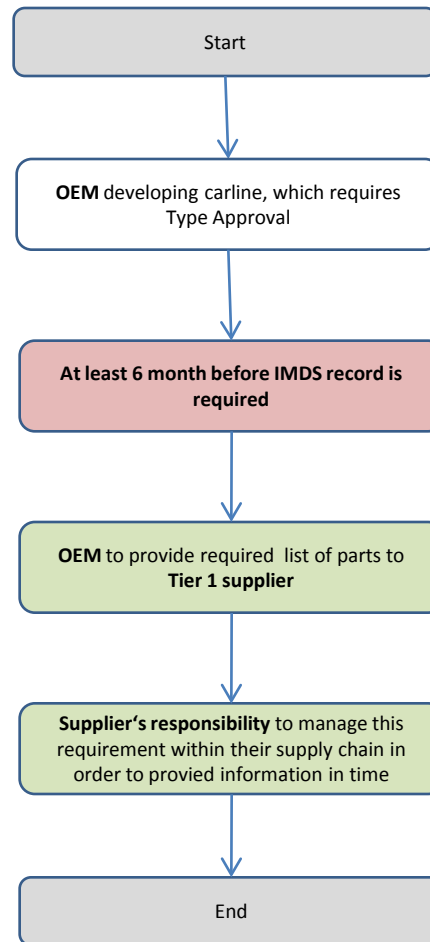
**Automotive Industry Interpretation Guide for ELV Annex II  
(2010/115/EU)**

**with**

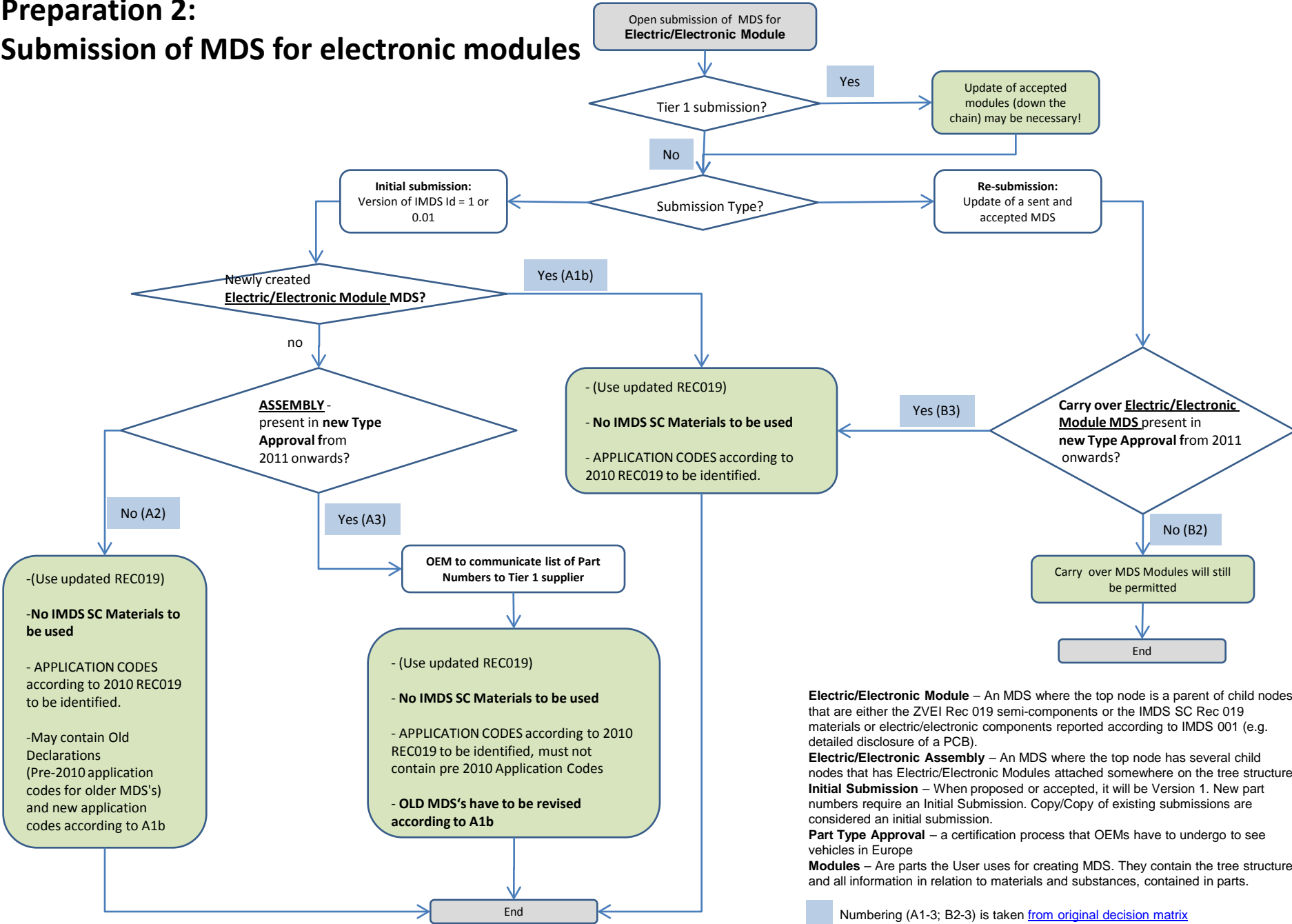
***IMDS Information added by the IMDS Steering Committee***

[http://www.mdssystem.com/html/data/imds\\_and\\_technical\\_definitions\\_for\\_elv\\_exemptions\\_8a\\_to\\_8i.pdf](http://www.mdssystem.com/html/data/imds_and_technical_definitions_for_elv_exemptions_8a_to_8i.pdf)

# Preparation 1: IMDS Rec019 Application Codes for electronic modules



# Preparation 2: Submission of MDS for electronic modules



**Electric/Electronic Module** – An MDS where the top node is a parent of child nodes that are either the ZVEI Rec 019 semi-components or the IMDS SC Rec 019 materials or electric/electronic components reported according to IMDS 001 (e.g. detailed disclosure of a PCB).

**Electric/Electronic Assembly** – An MDS where the top node has several child nodes that has Electric/Electronic Modules attached somewhere on the tree structure

**Initial Submission** – When proposed or accepted, it will be Version 1. New part numbers require an Initial Submission. Copy/Copy of existing submissions are considered an initial submission.

**Part Type Approval** – a certification process that OEMs have to undergo to see vehicles in Europe

**Modules** – Are parts the User uses for creating MDS. They contain the tree structure and all information in relation to materials and substances, contained in parts.

Numbering (A1-3; B2-3) is taken from original decision matrix