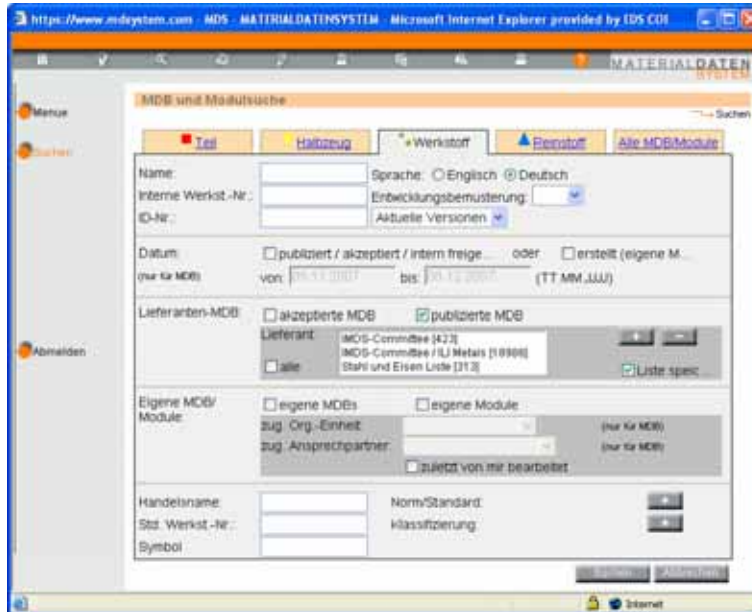


Example:

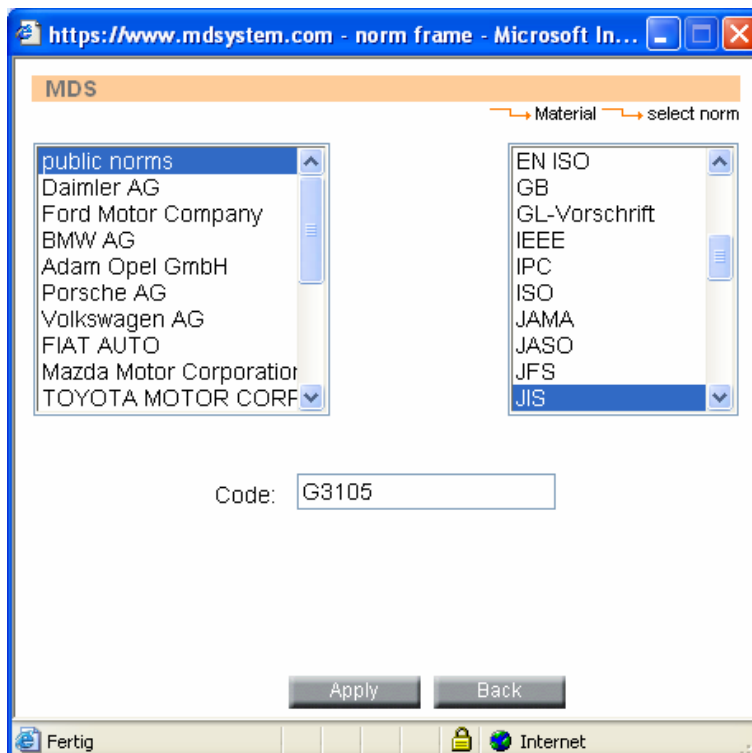
Search for an up-to-date material according JIS G3105 norm

You have to do the following in the material search:

1. Suppliers – you have to tick the box “published MDSs” and 3 suppliers are predefined in the list (IMDS Committee, IMDS Committee / ILI Metals, Stahl- und Eisenliste)



2. In the Norm/Standard section: click the "plus" button and on the left side public norms are chosen – on the right side chose JIS and put in G3105 for the Code.



- Click "Apply" – now there should be JIS G3105 set in the Norm/Standard section.

The screenshot shows the search interface for the MDS-MATERIALDATENSYSYSTEM. The 'Norm/Standard' field is highlighted with a red box and contains the text 'JIS G3105'. Other fields include Name, Interne Werkst.-Nr., ID-Nr., Datum, Lieferanten-MDB, Eigene MDB/Module, Handelsname, Std. Werkst.-Nr., and Symbol.

- Click on "Search". The result is a list of materials according to the JIS norm G3105.

Suchkriterien: publizierte MDB=Ja, Instbu=JIS, Norm Code=G3105, Lieferant=MDS-Commitz. [mehr...]
3 Elemente gefunden. Aufsteigend sortiert nach "Name, >Sym..."

Nr.	Name, >Symbol<	Handelsname	Werkst.-Nr.	ID / Version	Lieferant
1	SBC690			11894373 / 2	MDS-Commitz
2	SBC690			11894374 / 2	MDS-Commitz
3	SBC690			11894375 / 2	MDS-Commitz