

Honda IMDS Data Entry Manual

Honda Motor Co., Ltd.

Introduction

This manual specifies Honda unique IMDS data entry method based on the 'Honda product chemical substances/ recycling data collection manual'.

For IMDS data entry methods which are not included in this manual, please refer to the IMDS recommendation and IMDS User Manual.

In order to obtain the IMDS recommendation, IMDS User Manual and Honda IMDS data entry manual, please follow the methods explained below.

Documentation	Method
IMDS recommendation (Issued on HP)	Log on to the IMDS system and download the documentation from the Help Menu 'Recommendation'.
IMDS User Manual (Issued on HP)	Download the documentation from the IMDS login screen.
Honda IMDS Data Entry Manual (Issued by Honda)	The documentation is posted in the IMDS official Home Page : https://public.mdsystem.com/en/web/imds-public-pages/oem-specific-info It's downloaded from Honda.

Contents

1. Registration of IMDS Company ID/ Organization ID.....	3
2. Preparation of Material Data Sheet.....	3
2.1 IMDS Recommendations	3
2.2 Language for Data Entry.....	3
2.3 Recipient Data Entry	4
3. Data Confirmation	8
4. Contact detail for making enquiries.....	9



1. Registration of IMDS Company ID/ Organization ID

Please inform Honda PIC of all IMDS Company IDs/Organization IDs that will be used when submitting a material data sheet (MDS) to Honda.

2. Preparation of Material Data Sheet

2.1 IMDS Recommendations

If there is not a specific request from Honda, please follow IMDS recommendations.

If it is identified that the MDS did not follow IMDS Recommendations, you will see a warning message before you submit the MDS.

These warnings must be resolved prior to proposing the MDS to Honda. If you are unable to resolve the warning, contact your regional Honda PIC.

IMDS recommendations are available to download after you log into IMDS.

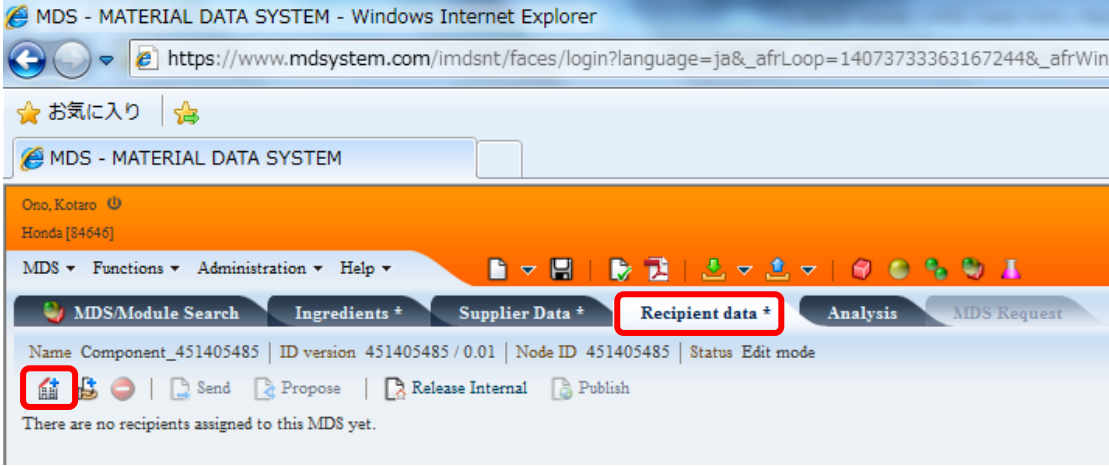
2.2 Language for Data Entry

IMDS offers 2 choices of languages (English: EN or German: DE) for name of material data sheet, product name and Note column. When entering data which is to be submitted to Honda, always select English: EN

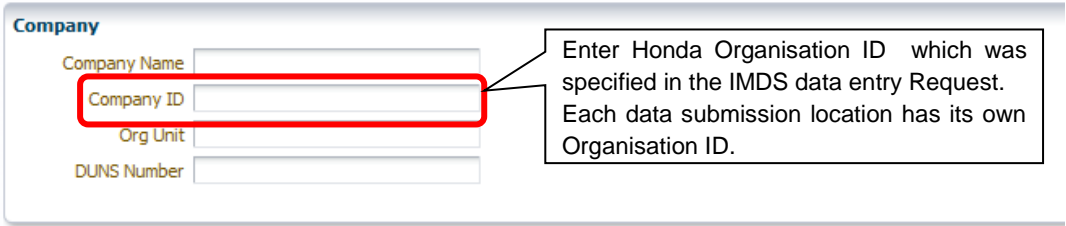


2.3 Recipient Data Entry

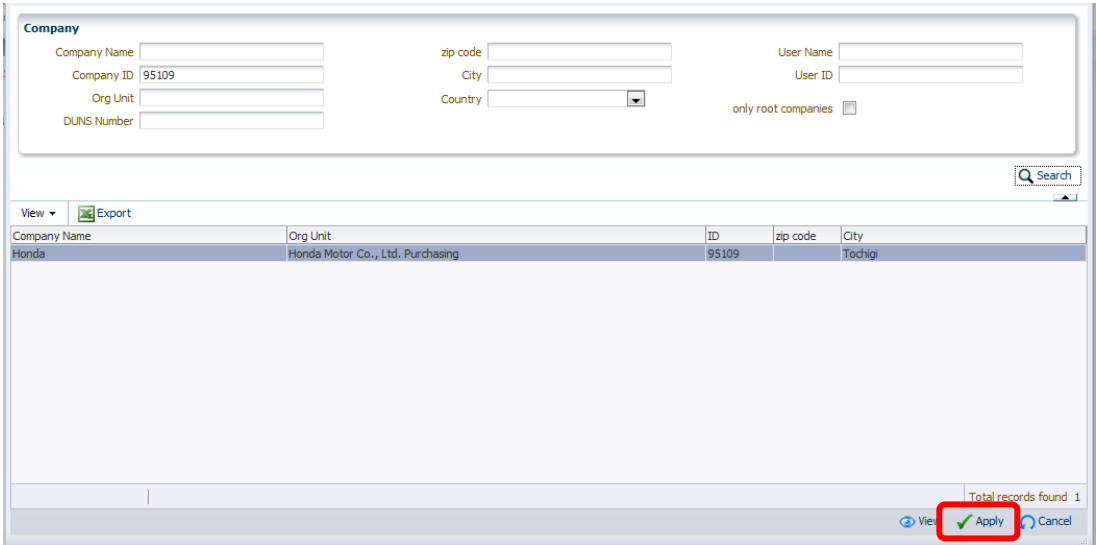
After you have entered 'Ingredients', 'Recycling information' and 'Supplier data', click 'Recipient data' and 'Add recipient'.



Under the Search Criteria, select 'Org.-Unit' and enter Honda Organisation ID which was specified in the IMDS data entry request, and click 'Search'.



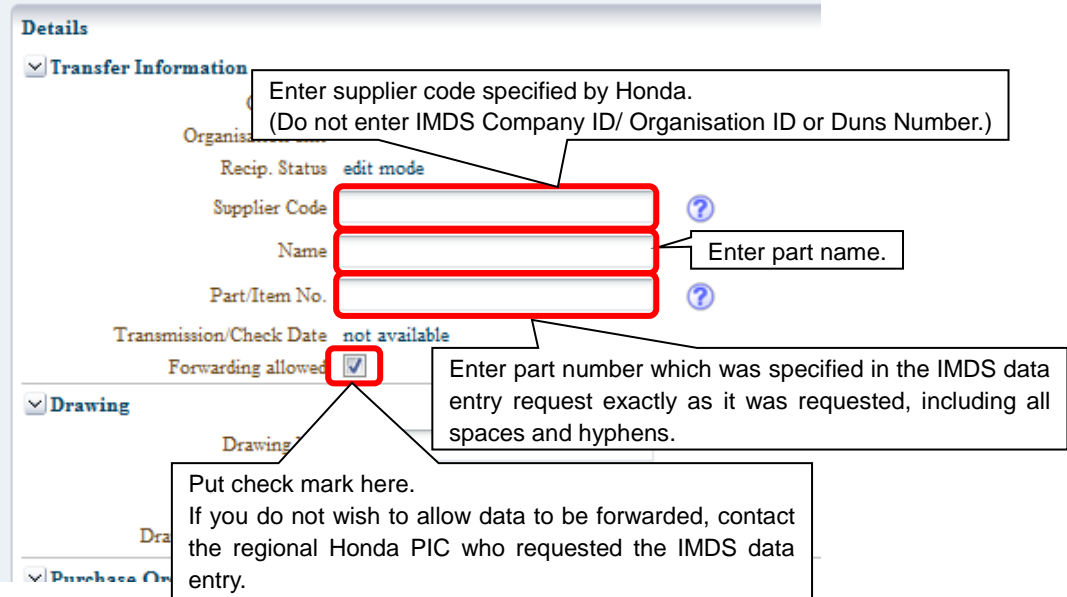
Confirm that the search result displays the correct recipient information which was specified in the IMDS data entry request, and then click 'Apply'.





(1) If data sheet is for Component:

Enter Supplier Code, Part name and Part No. then click Send after you check Forwarding allowed.



※Attention!!

When you enter a part number, you, Honda, need to follow a provision of part number which is stipulated by HES 032.

Do not forget to enter the spaces or hyphens as they are stated on the drawings. (For service parts it shows a part number with hyphens when to request survey)

【Part number Legend】

Development Part number:
 12345-ABCX-0000
 12345-ABCX-0000-M1

MP Part number:
 12345-ABC -0000
 12345-ABC -0000-M1

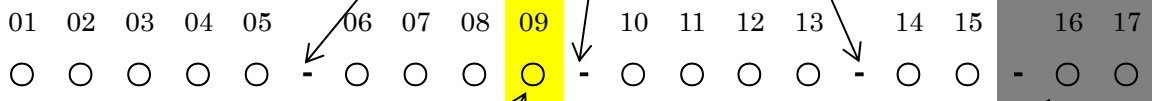
Order part number:
 12345-ABC -0000-AA

Std. Part number:
 92101-12345
 92101-12345-0A

Service Exclusive Part number:
 12345-ABC-000
 12345-ABC-000ZA

【Part number rule】

DO NOT forget hyphens.



<About 9th digit>

- For Prototype : one alphabet
- For Mass production : one blank
- For Service part: There is no 9th digit align the following hyphen and later number to left.

<About 16th and 17th digits>

DO NOT enter these codes during data creation.

In MoCS its controls 1-15th digit and it does not manage 16-17 digits. Please make sure that these codes will not be entered. Otherwise it causes unmatched between a part number.



(2) If data sheet is for Semi component:

Enter Supplier Code, Part Name or Material Name, Part No. or Material Code, then click Send after you put check on Forwarding allowed.

(3) If data sheet is for Material:

Enter Supplier Code, Material Name, Material Code, then click Send after you put check on Forwarding allowed.



3. Data Confirmation

Honda confirms data you have sent and judges either 'OK (Approve)' or 'NG (Reject)' via the IMDS system. If the judgment is 'Reject', error codes will appear.

Please see below list of error codes and corrective actions.

List of Error Code

Error Code	Detail	Corrective Action
ECL00001	Supplier code or IMDS Company ID/Organization ID does not exist.	Enter supplier code specified by Honda (Do not enter IMDS Company ID, Organisation ID or Duns Number) and resend. If you have not informed Honda of all IMDS Company ID/Organization ID, please notify Honda. In case you send data to Honda IMDS Org ID which is different from the one specified by Honda at when survey requested, please correct the ID and resend.
ECL00002	Mass production part data was submitted in a Development Sample Report.	Remove 'Development sample report check' from the data sheet and resend.
ECL00003	Data was sent to inappropriate ID	Confirm Organisation ID under Recipient information and enter Honda Organisation ID specified at the point of Survey Request, and resend.
ECL00004	Part Number (Material Code) does not exist.	Confirm part number or internal material code in IMDS Recipient data menu and enter correct part number or material/secondary material code specified in the IMDS data entry request, and resubmit. Check type of data sheet- Component, Semi-Component, Material- and then make a MDS by following IMDS Recommendation 001, then resubmit the MDS.
EMG00003	NH mark judgment result highlighted Banned substances.	Correct chemical substances or application code and resend.
EMG00004	NHBB mark judgment result highlighted Banned substances.	Correct chemical substances and resend.
EMG00005	HRL mark judgment result highlighted Banned substances.	Correct chemical substances and resend.
EMG00006	HR mark judgment result highlighted Banned substances.	Correct chemical substances and resend.
EMG00007	HR1 mark judgment result highlighted Banned substances.	Correct chemical substances and resend.
EMG00008	HR3 mark judgment result highlighted Banned substances.	Correct chemical substances and resend.
ERC00001	Difference with Drawing Wt is beyond allowable range.	Correct the weight and resend When Drawing Wt is incorrect, please contact PIC in Honda

If the MDS you sent have not followed IMDS Recommendation, you may be requested to modify the MDS after it is accepted.



4. Contact detail for making enquiries

- Inquiry regarding the content of this manual

Please contact the IMDS contact person of individual Honda local entities.

- Inquiry regarding general IMDS matters

Please directly contact the IMDS service centre available.

<https://public.mdsystem.com/en/web/imds-public-pages/imds-service-centers>

<https://public.mdsystem.com/zh/web/imds-public-pages/imds-service-centers>

History of document revision

Issue date		Reason of revision
0	Establishment : 29 Oct 2009	Newly prepared.
1	Revised on 12 Apr 2010	Correction Addition of caution for inputting the part number
2	Revised on 10 Oct 2012	Addition of IMDS Recommendation compliance Addition of weight tolerance rule. Modification of error content and how to measure. Modification of where to contact.
3	Revised on 28 Aug 2013	IMDS screens changed due to IMDS 8.0 released.
4	Revised on 17 Dec 2014	Modification of obtain of Honda IMDS Data Entry Manual. Modification of where to contact.
5	Revised on 8 Feb 2016	2.3 A statement about Weight Tolerance is deleted. (To follow the rules of deviation between measured and calculated weight) The capture of “Attention when entering a part number” is modified. (No content change) New statement in part number entry rules.