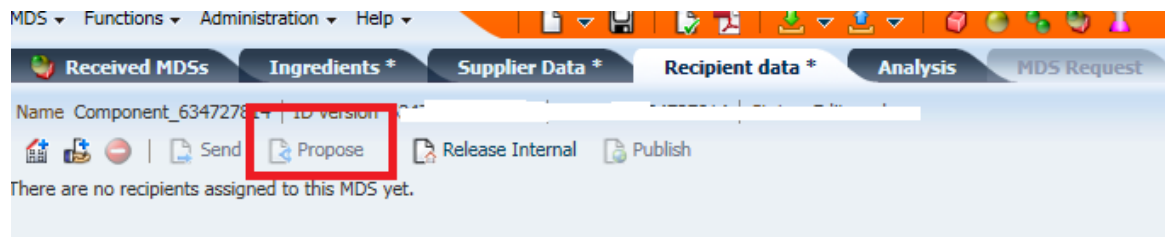


Dear Suppliers Sending IMDS Data to Ford IMDS Account:

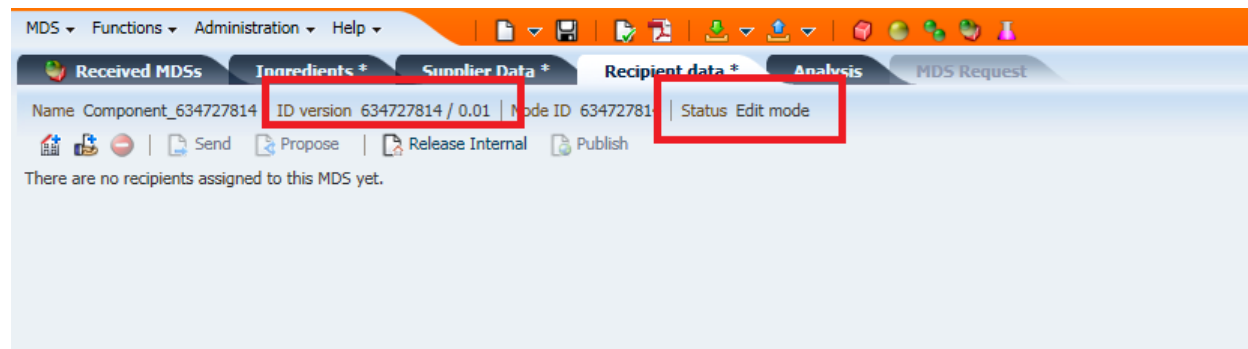
Please be aware that Ford Motor Company will no longer be accepting IMDS datasheets in edit mode. As of Monday, January 23, 2017 any IMDS data sheet received by Ford in edit mode will be rejected.

You must use the “propose” function instead of the send function to send data sheets to Ford. This will send the data sheet in a full version and not in edit mode.

If you use the send function and the datasheet is in edit mode, it will be rejected by Ford's internal system.



Edit mode below will no longer be accepted.



We apologize for any inconvenience, but this is something we must do to ensure a robust compliance process.

Thank you for your attention.